

West Cleveland Muslim Association

(WCMA)



WCMA's New Community Center

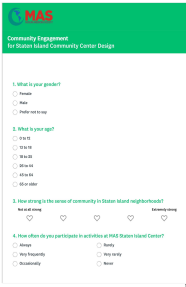


# Contents

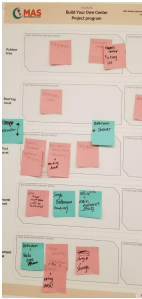
1. Methodology & Approach\_MAS SI
2. Project Program\_WCMA
3. Future Scenario - 10 Years Vision
  - a. Master Plan
  - b. The Center
  - c. 3D Exterior
4. Future Scenario - 0 to 5 Years vision
5. Recommendations

# Methodology & Approach

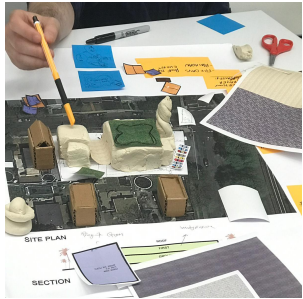
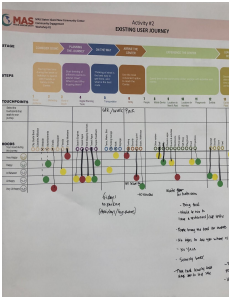
MAS Staten Island New Community Center, NY



Online Survey



Stakeholder Engagement Exercises & Design Toolkit



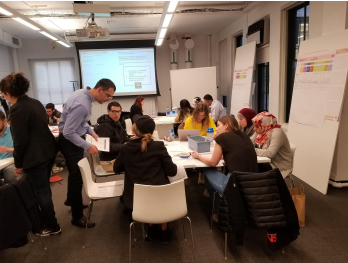
2nd Workshop



Desk Research

RFP, 12 architectural Firm

1st Workshop



# Methodology & Approach

MAS Staten Island New Community Center, NY



**Sherif Ahmed,**  
Executive Director, MAS SI

<https://drive.google.com/open?id=19Q6fnOqowV1P1woOlm5PtBXMTdXOWguM>






# Project Program

## WCMA's New Community Center

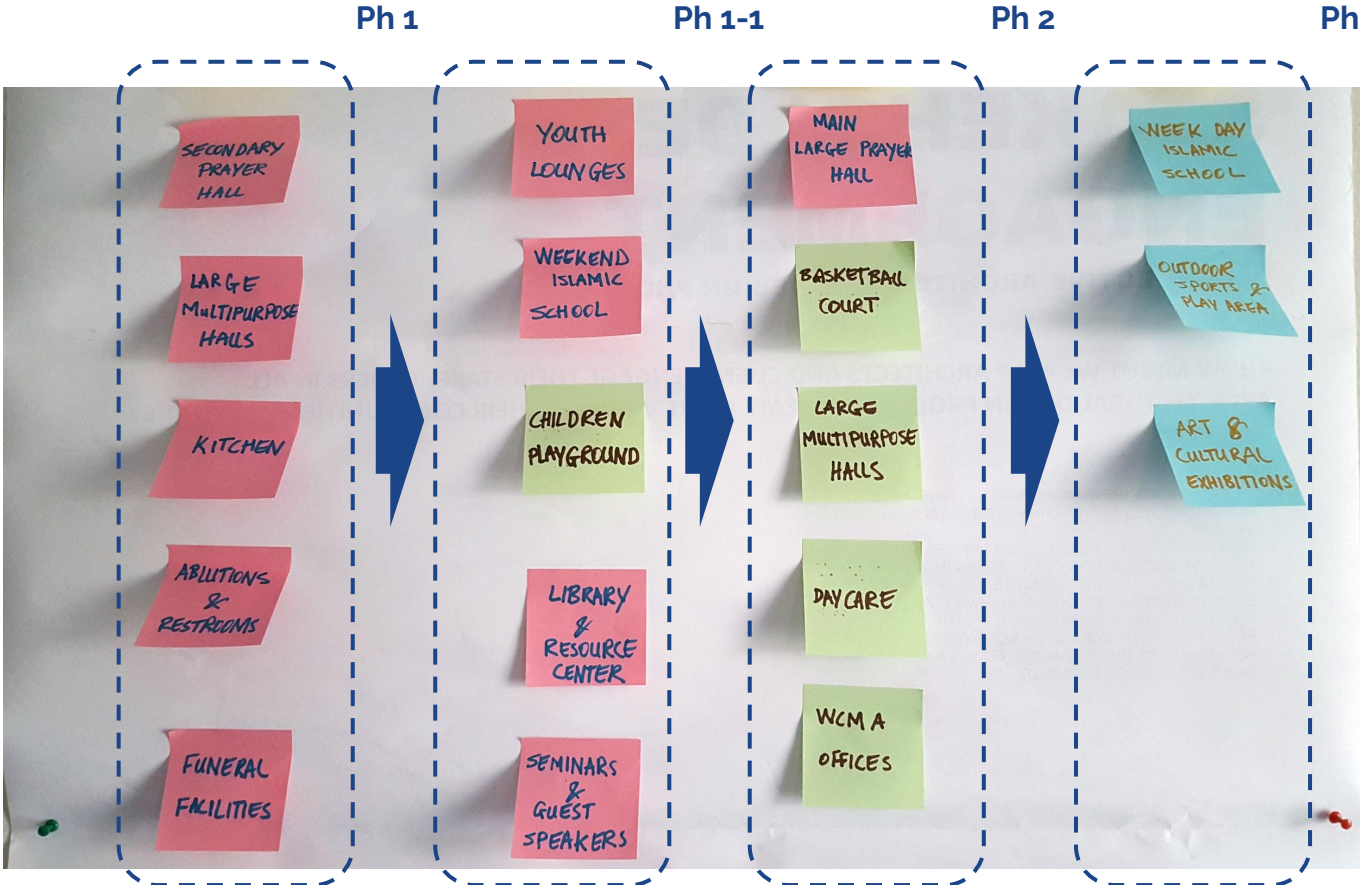
No.	Category	Spaces	Need it (Yes/No)	Priority (1-HIGHEST, 2, 3-LOWEST)	Note
1	Social spaces	Large multipurpose halls, which could host community gathering and events; weddings; Ramadan dinners; Eid...	Yes	1	
		Large cafeteria	Maybe	2	This could be the same as the large multipurpose hall.
		Guest houses	No	3	
		Youth lounges	Yes	1	
2	Cultural / Learning spaces	Library and resource center	Yes	1	
		Art and cultural exhibitions	Maybe	3	Currently its not on anyone's radar but I think this should be incorporated within the space.
		WCMA Offices, Interpreting and translation services, media representation	Yes, future	2	They don't want this in phase 1, but could see this in phase 2 or 3
		Weekend and holidays Islamic school, English/Arabic classes	Yes	1	Phase 1 - this could be within the large open spaces.
		Week day Islamic school	No	2	There is some talk of this but the board does not think this is important at the moment.
		Daycare for the whole week days	Maybe	3	This is not on the board's radar right now. I could see this going into the building in the future.
		Seminars and guest speakers	Yes	1	AV system needs to be decent. Guest speakers are a regular.
3	Spiritual / religious spaces	Main large prayer hall hosts Friday, Ramadan, and funeral prayers.	Yes	1	This is standard.
		Secondary prayer hall hosts the five daily prayers	Yes	1	The women could be incorporated into this daily space as well.
		Ablutions and toilets facilities.	Yes	1	I'd like to see these better designed / organized than they currently are.
		Funeral facilities	Yes	1	This space is going into the space with the water heaters and air handlers for the pool.
4	Sports and recreation spaces	Swimming pool	?	?	The community has not been poled for this. I think they would want it.
		Gymnasium	Maybe	2	Again - no polling data - but I'm sure the youth would want this.
		Basketball court	maybe	2	This is the same as a gymnasium as far as the board is concerned.
		Children playground	maybe	2	Again no polling data - We have many babies. I think we should give them a place to play.
		Outdoor sports and play area	maybe	2	Maybe the basketball court on top of the outdoor pool becomes an outdoor court?
5	Commercial spaces	Kitchen	yes	1	the kitchen the board wants is a small warming kitchen with a stove. This would be for non-commercial use.
		Cafeteria	No	10	
		Gift shops to sell food, books and clothing	No	10	

### Key Legend:

	Phase 1
	Phase 2
	Phase 3

# Project Program

WCMA's New Community Center

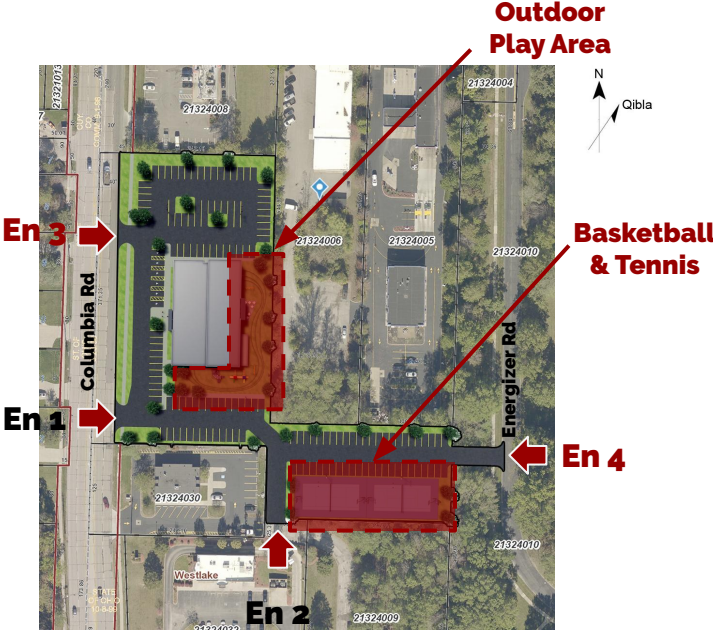




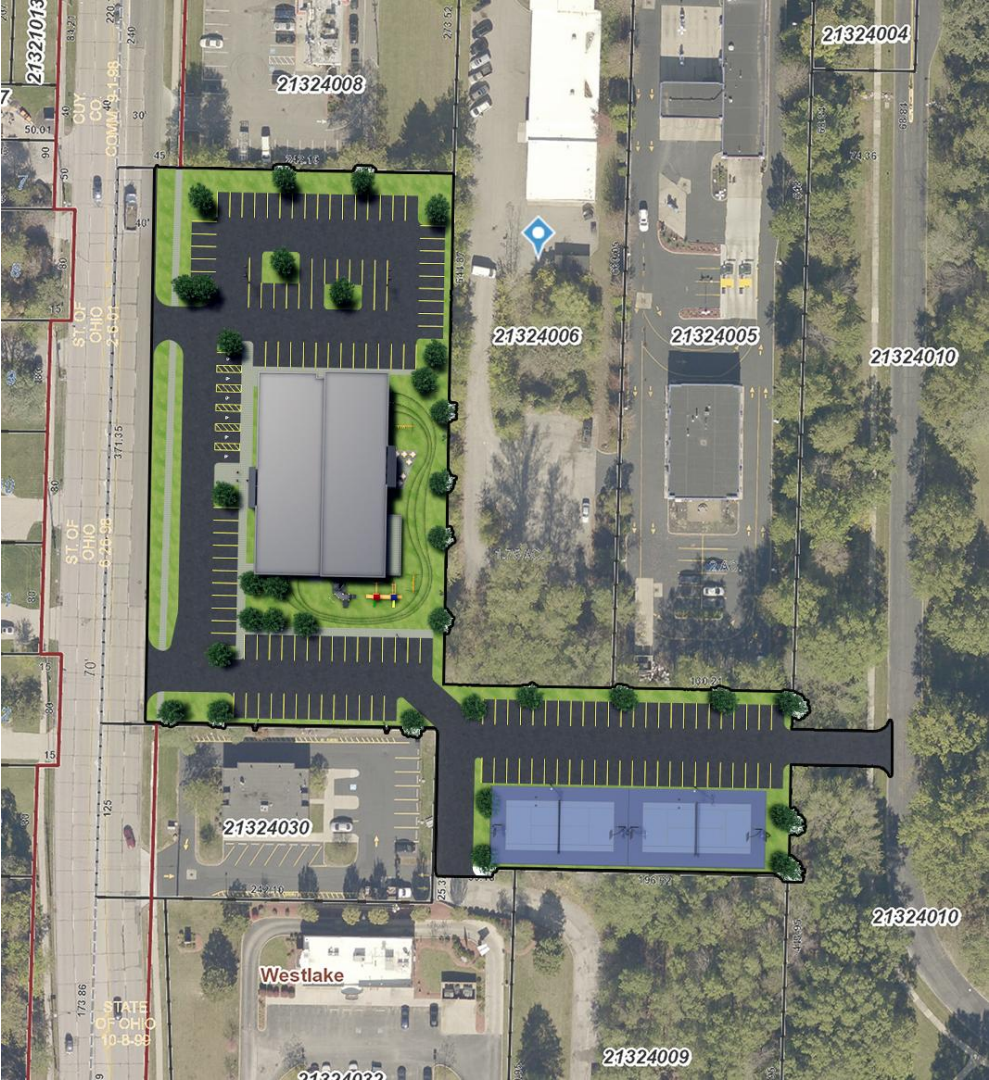
# Future Scenario - 10 Years Vision

WCMA's New Community Center

## Master plan



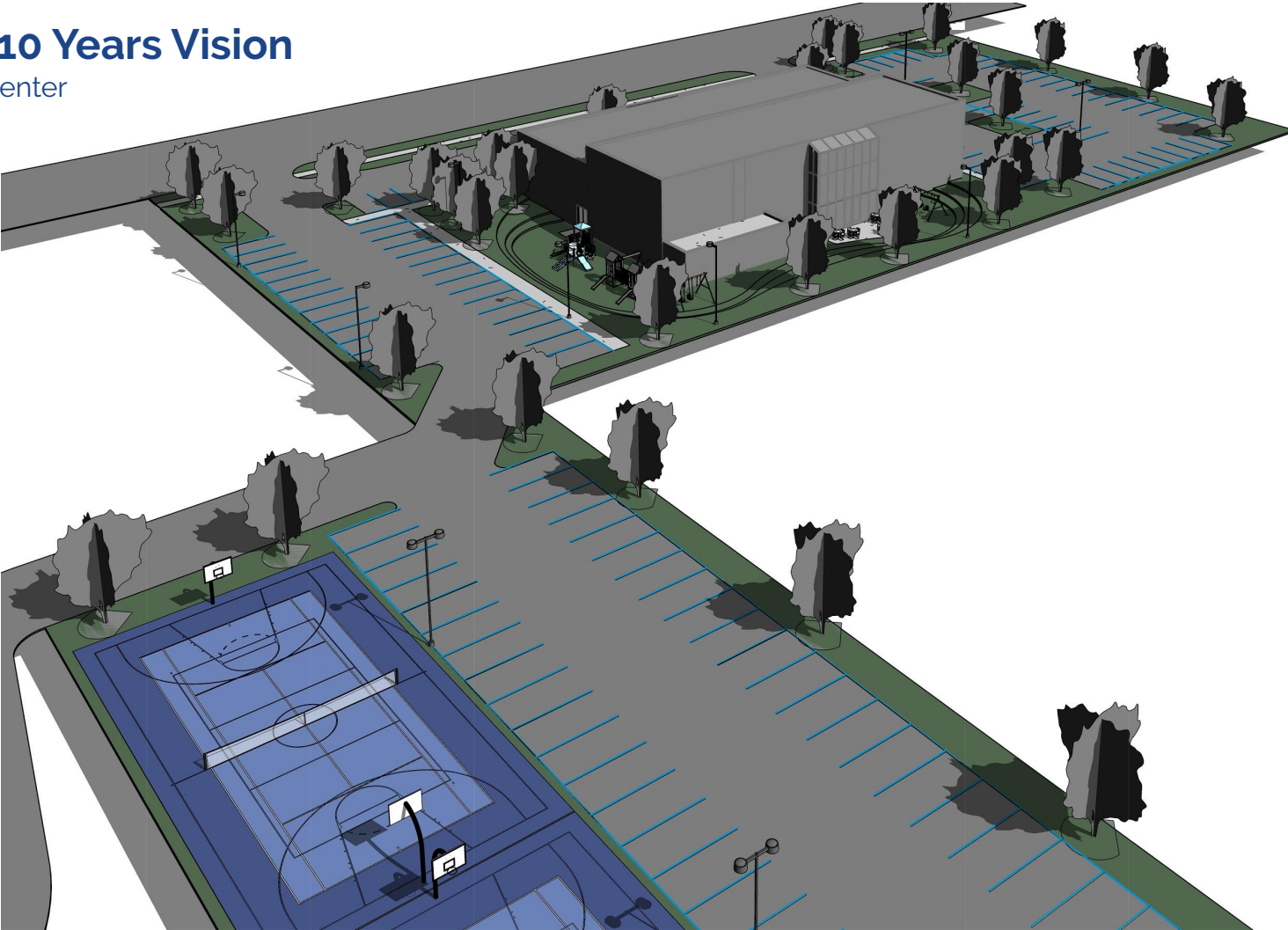
152 Parking lots



# Future Scenario - 10 Years Vision

WCMA's New Community Center

## Master plan

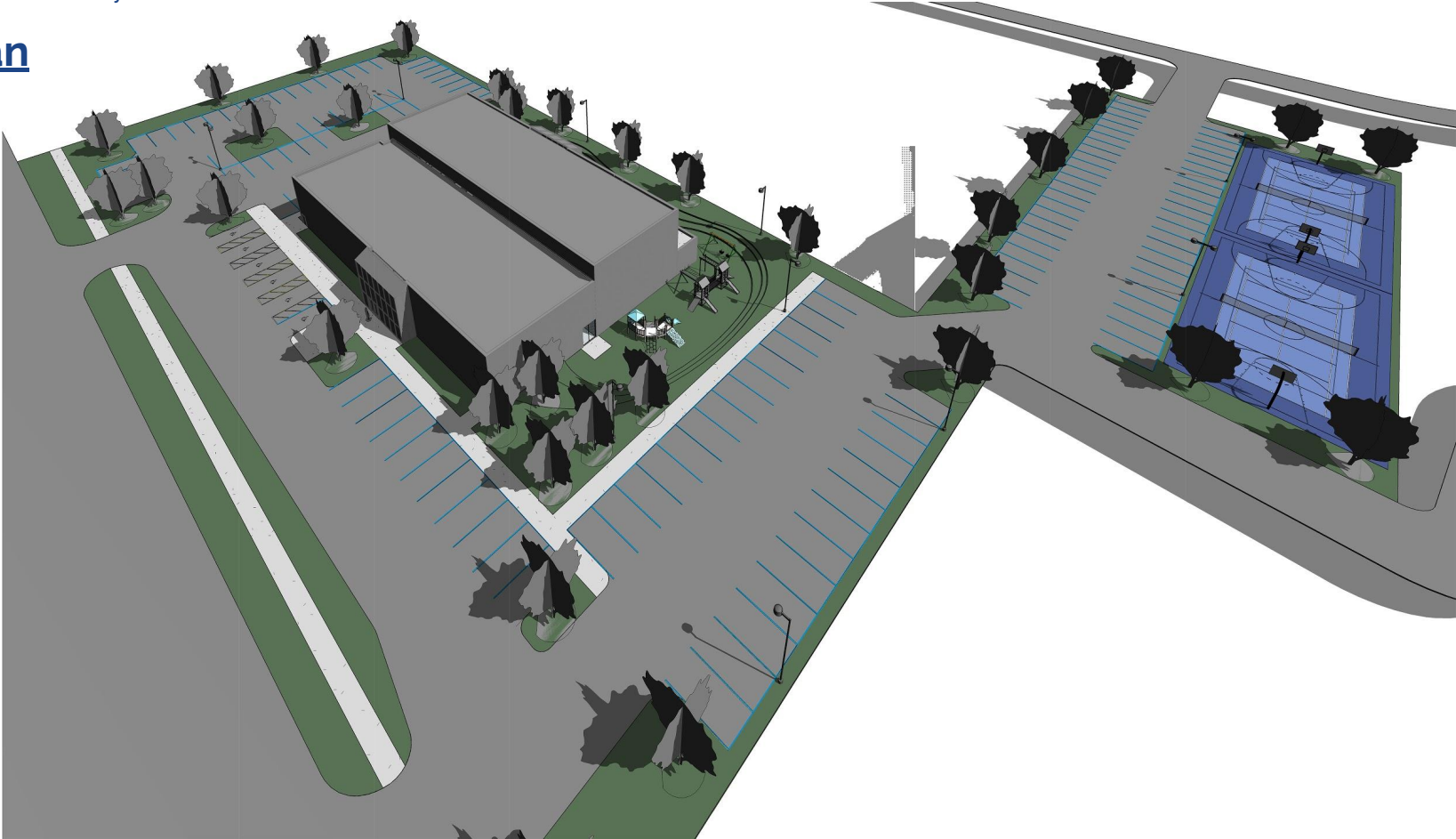




# Future Scenario - 10 Years Vision

WCMA's New Community Center

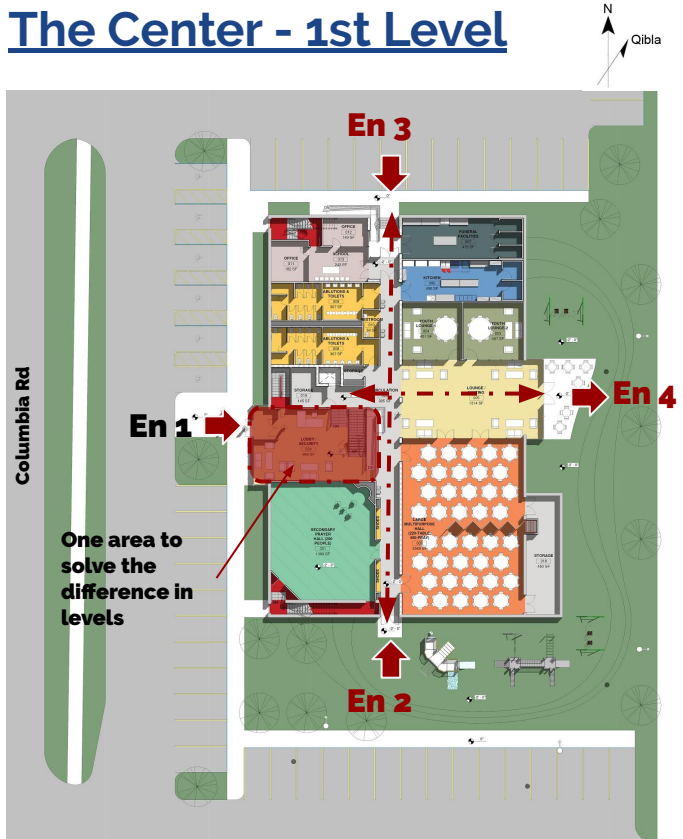
## Master plan



# Future Scenario - 10 Years

WCMA's New Community Center

## The Center - 1st Level

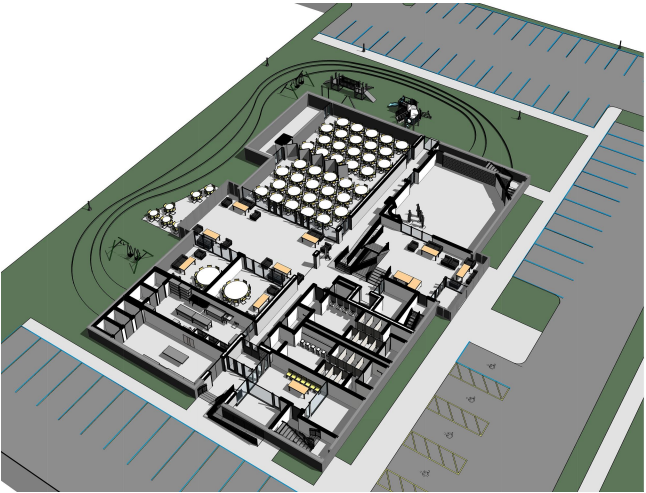
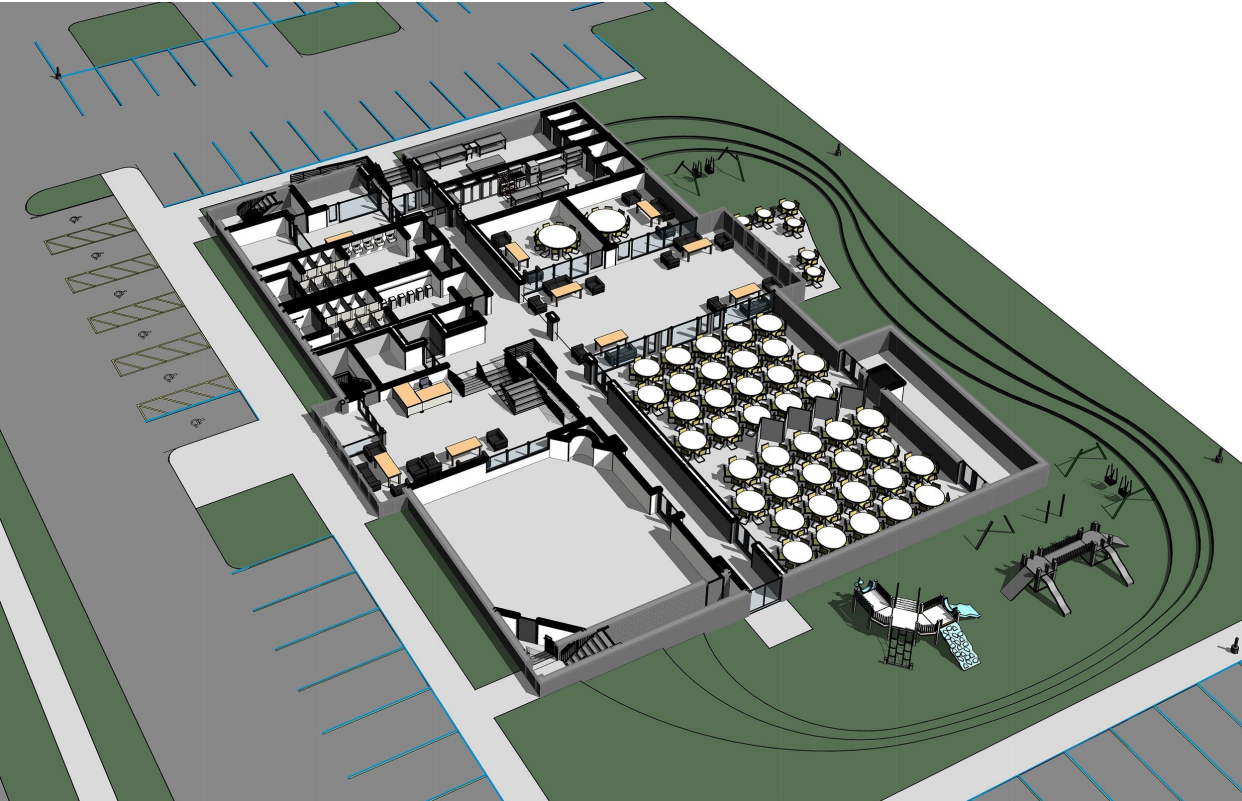


650 People for Pray / 220 People with table

# Future Scenario - 10 Years

WCMA's New Community Center

## The Center - 1st Level

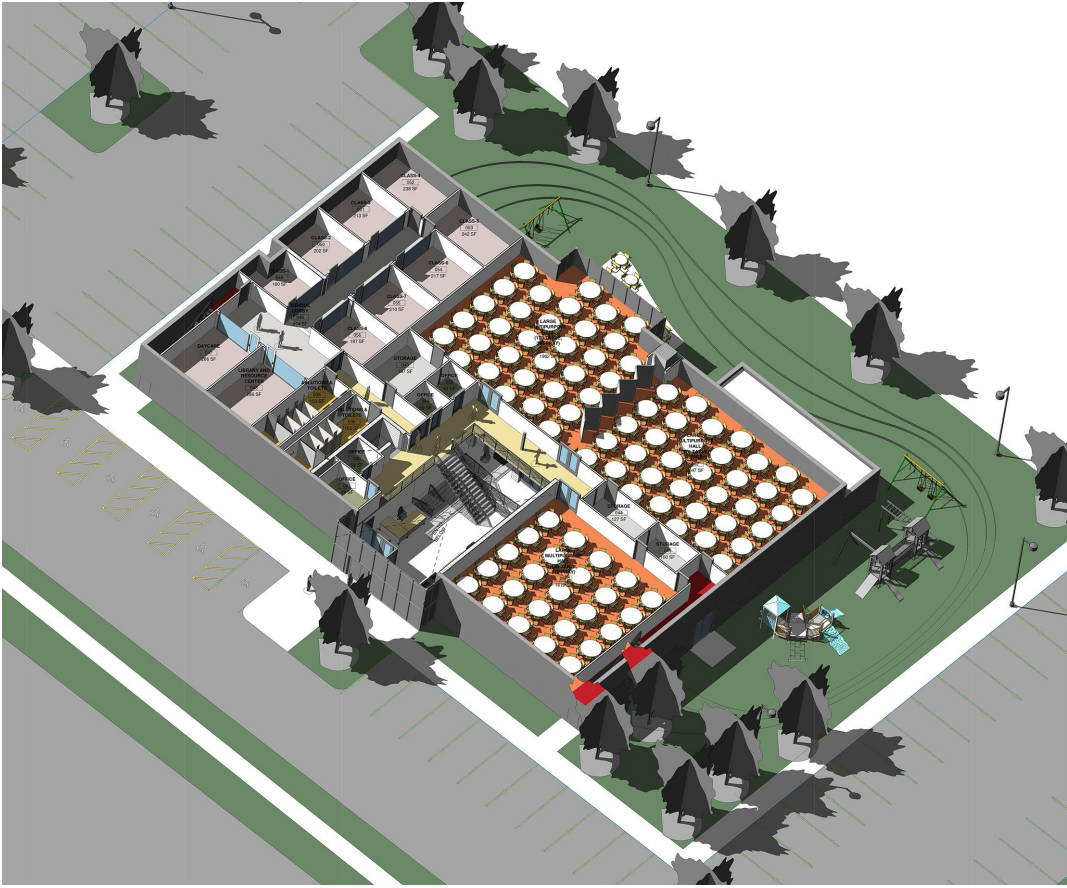
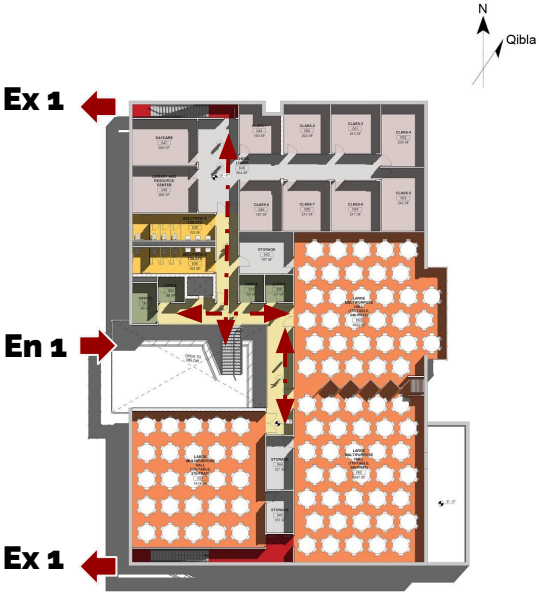




# Future Scenario - 10 Years

WCMA's New Community Center

## The Center - 2nd Level



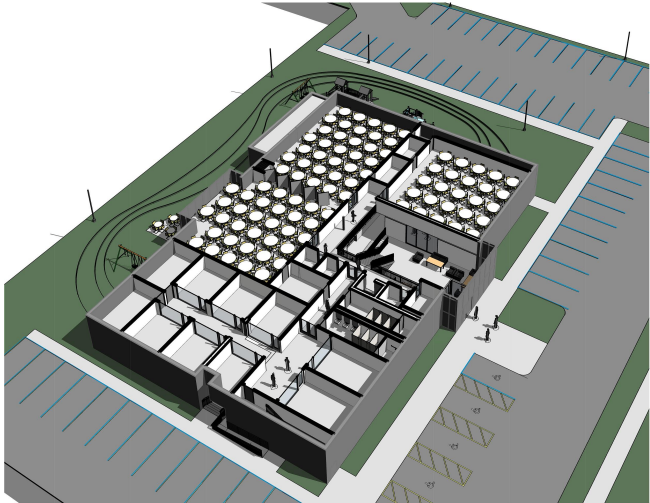
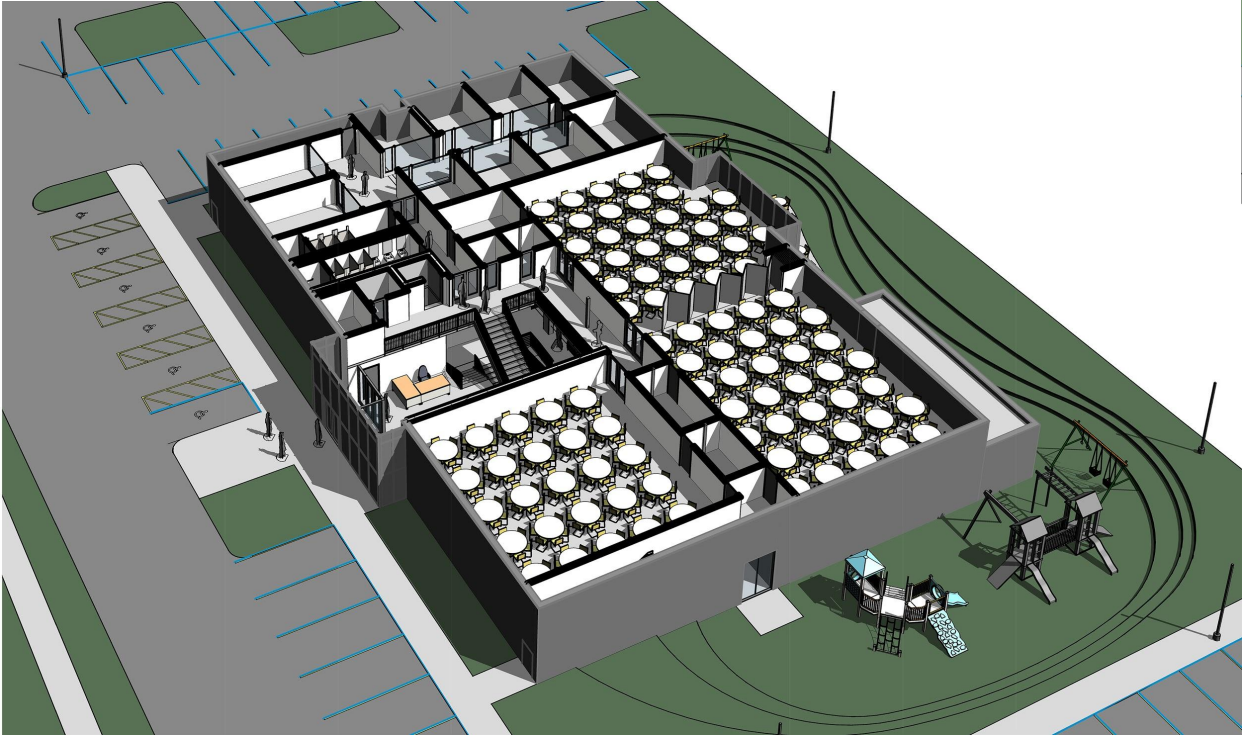
950 People for Pray / 475 People with Table



# Future Scenario - 10 Years

WCMA's New Community Center

## The Center - 2nd Level

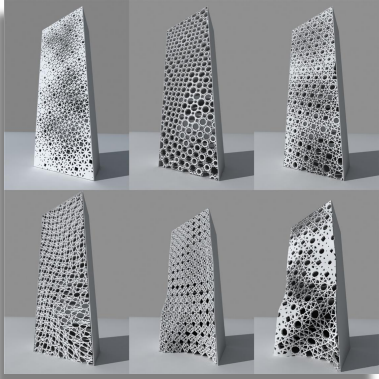


# Future Scenario - 10 Years

WCMA's New Community Center



Pattern Options



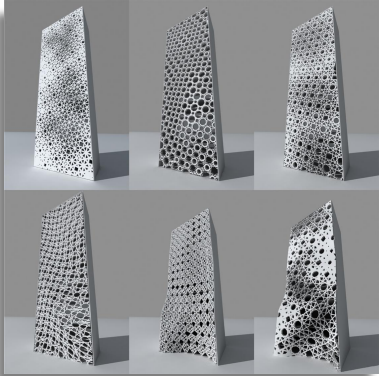


# Future Scenario - 10 Years

WCMA's New Community Center



Pattern Options



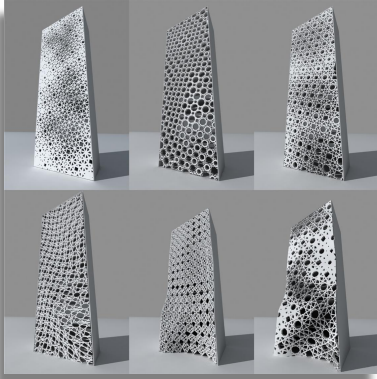


# Future Scenario - 10 Years

WCMA's New Community Center



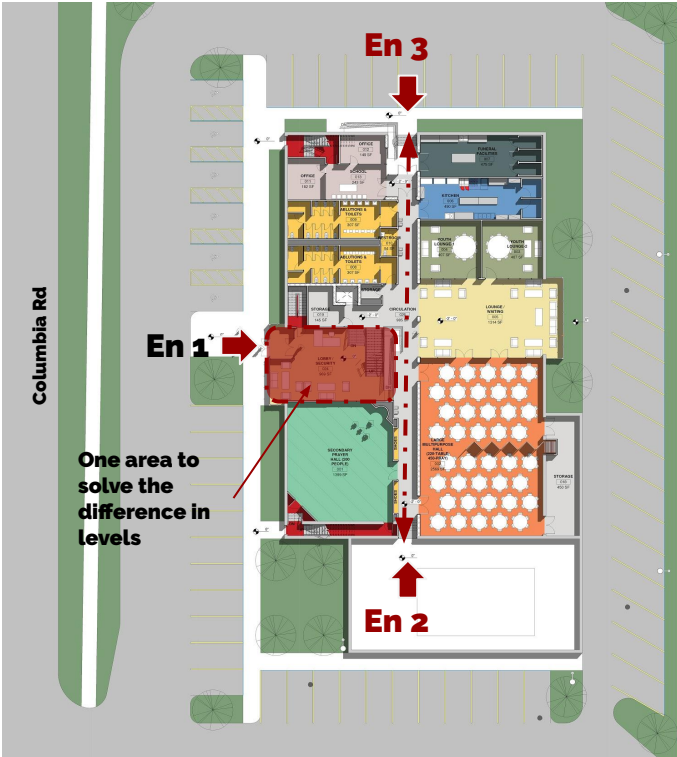
Pattern Options



# Future Scenario - 0 to 5 Years

WCMA's New Community Center

## The Center - 1st Level



650 People for Pray / 220 People with table



# Future Scenario - 0 to 5 Years

WCMA's New Community Center

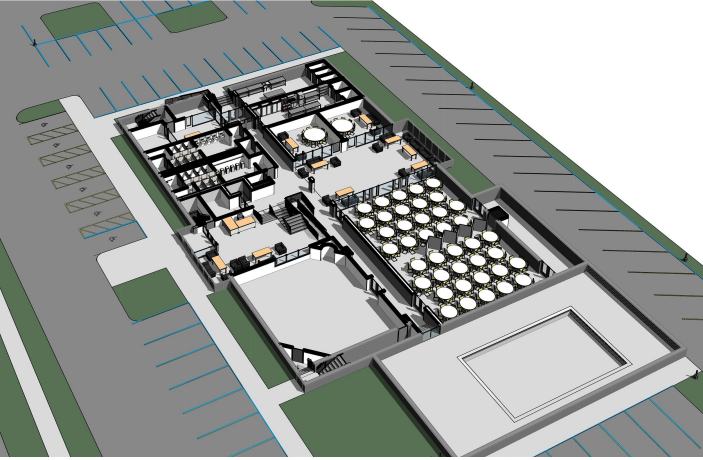
## The Center - 1st Level Phase 1



# Future Scenario - 0 to 5 Years

WCMA's New Community Center

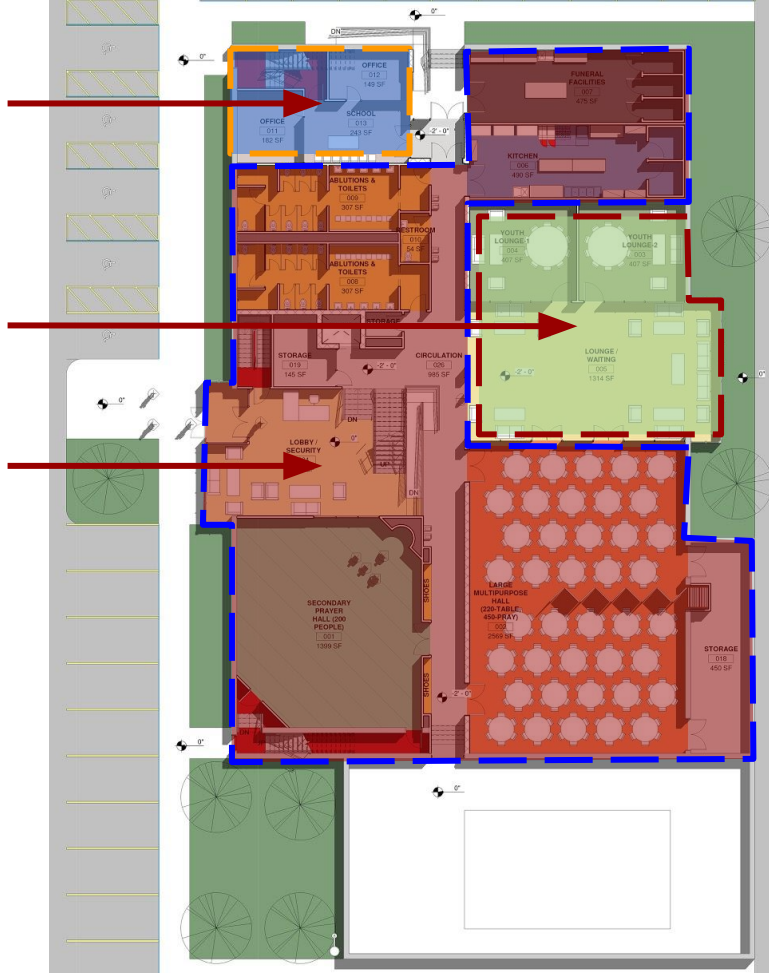
## The Center - 1st Level



Phase 3

Phase 2

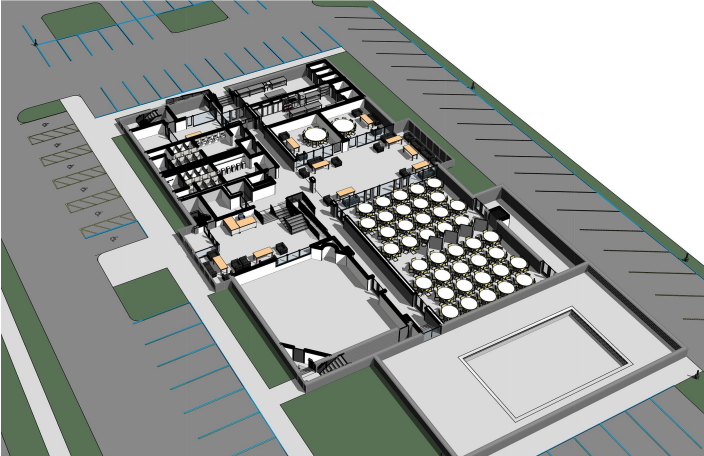
Phase 1



# Future Scenario - 0 to 5 Years

WCMA's New Community Center

## The Center - 1st Level

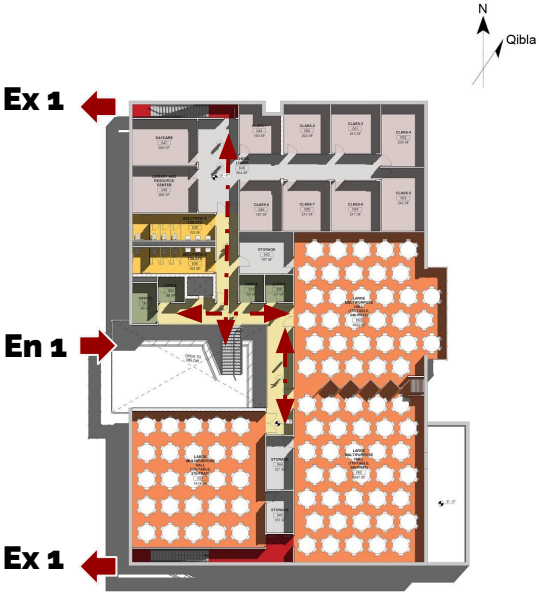




# Future Scenario - 0 to 5 Years

WCMA's New Community Center

## The Center - 2nd Level

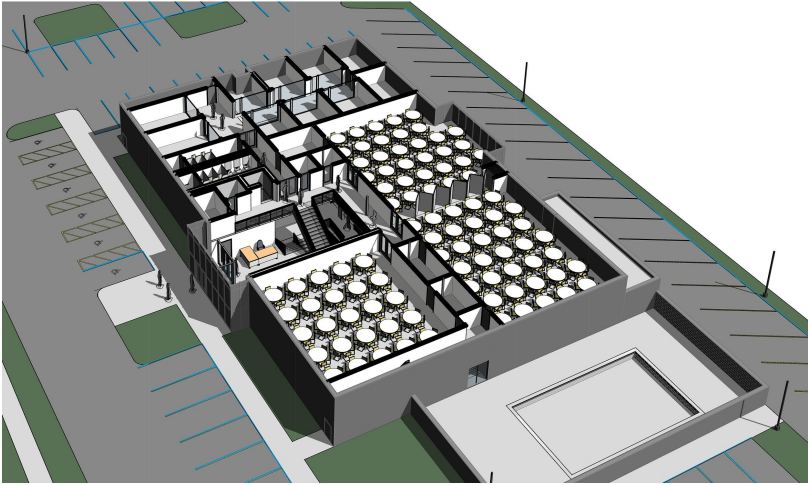


950 People for Pray / 475 People with Table

# Future Scenario - 0 to 5 Years

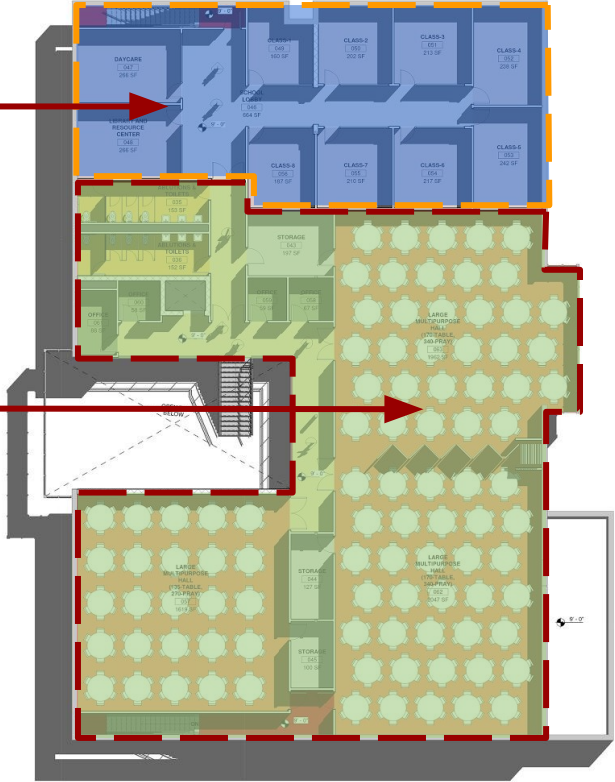
WCMA's New Community Center

## The Center - 2nd Level



Phase 3

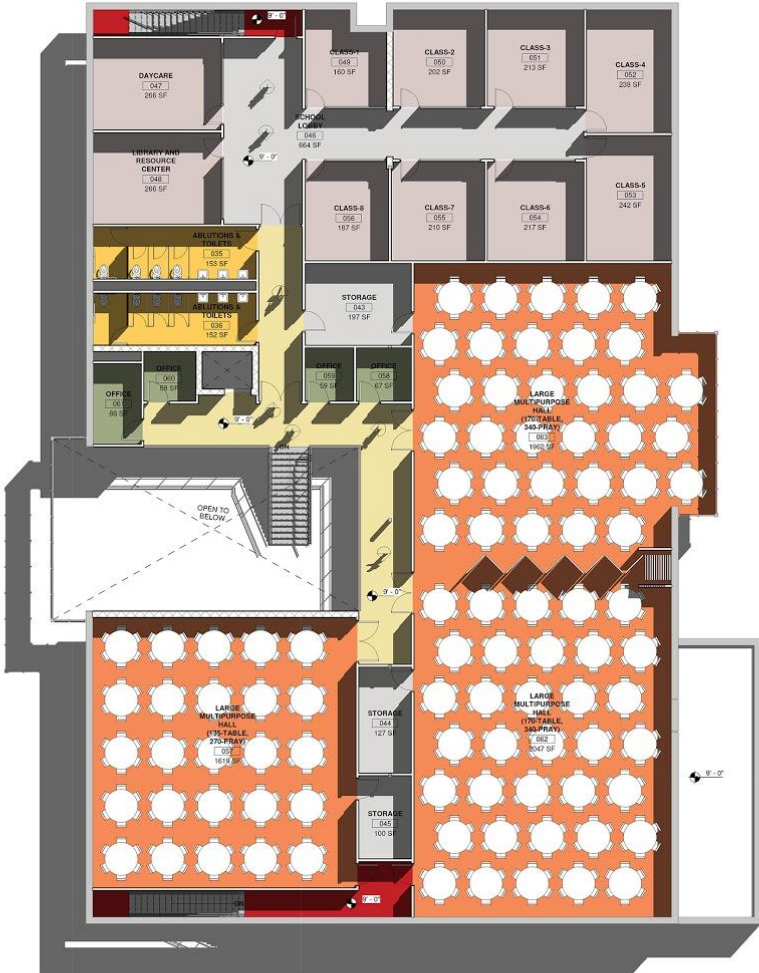
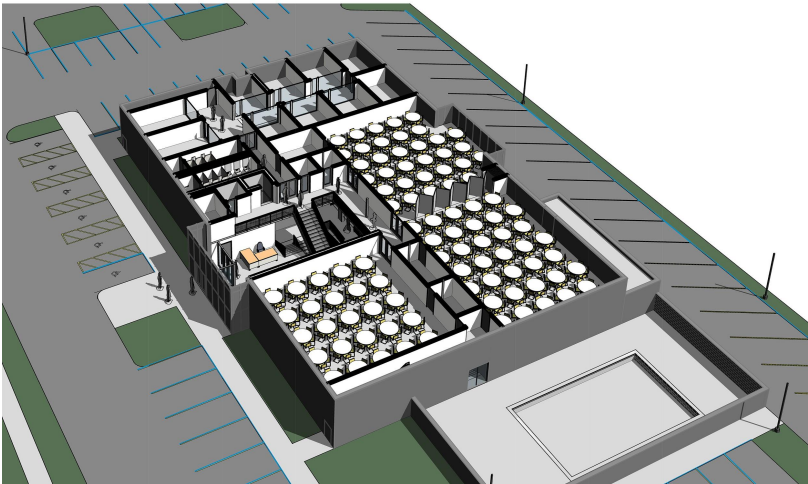
Phase 2



# Future Scenario - 0 to 5 Years

WCMA's New Community Center

## The Center - 2nd Level



# Recommendations

## WCMA's New Community Center

1. **Make the minimum intervention in the center and use part of space immediately (Phase 1).**
2. **Go back to the community to engage them and verify the project program:**
  - **Build the database about the community.**
  - **Design an online survey.**
  - **Workshops.**
  - **1 to 1 meeting.**
3. **Building a concrete project program.**
4. **Engage all the community with the WCMA vision and process to add more value and collect donations for development.**
5. **Building a business plan to run and invest in the center.**